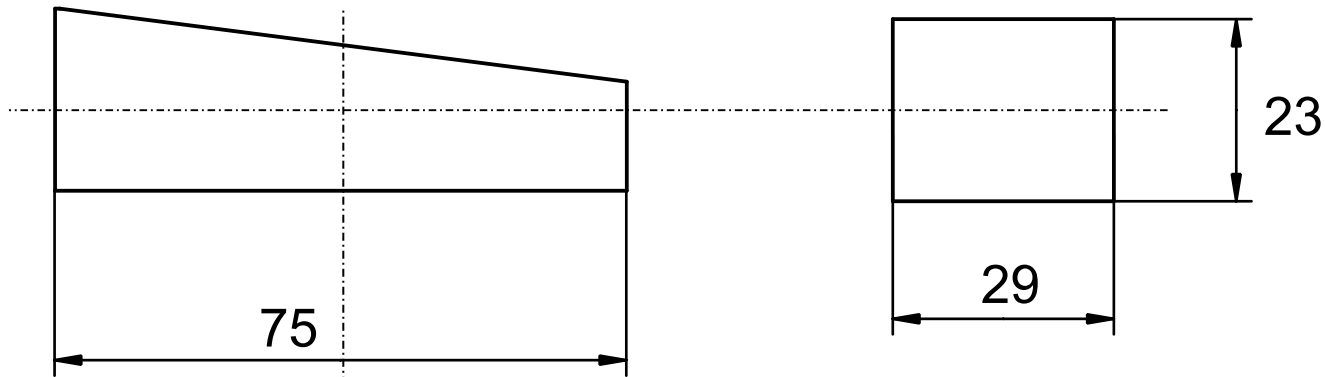
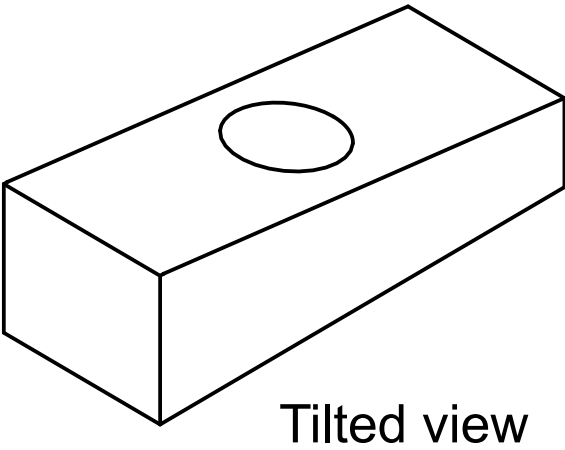
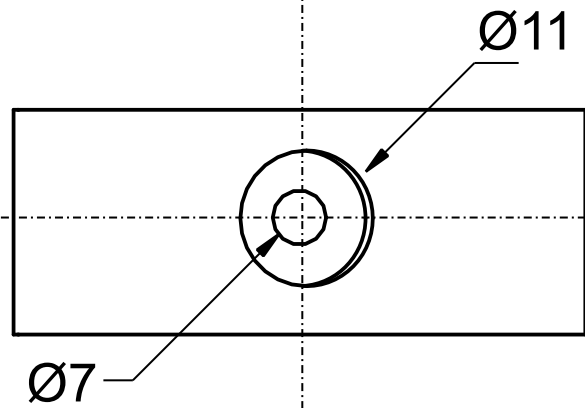

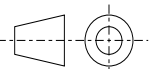


Anodes compatible with Honda



Reference number
18-6068/41109--ZW1



 ISO (Norm) 	Anode Category : Anoden compatible with Honda	Article: 9544AL			
	Material: AlZn5In	Weight: 0,100kg			
	(For information only, is not subject to change management)		Scale: 1:1	Zst:	Changes:
				Date:	